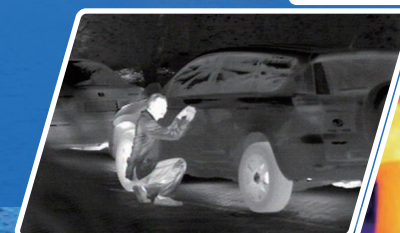
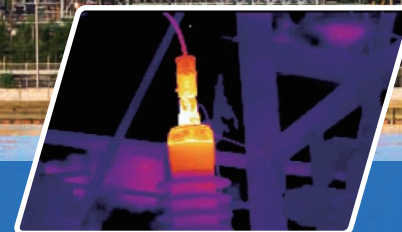




Smart Thermal Imaging

Products and Solutions

2016 1st Quarter



CONTENTS

- **Thermal Cameras** 06
 - Hybrid Thermal Series
 - Thermal Series

- **Network Video Recorder** 11

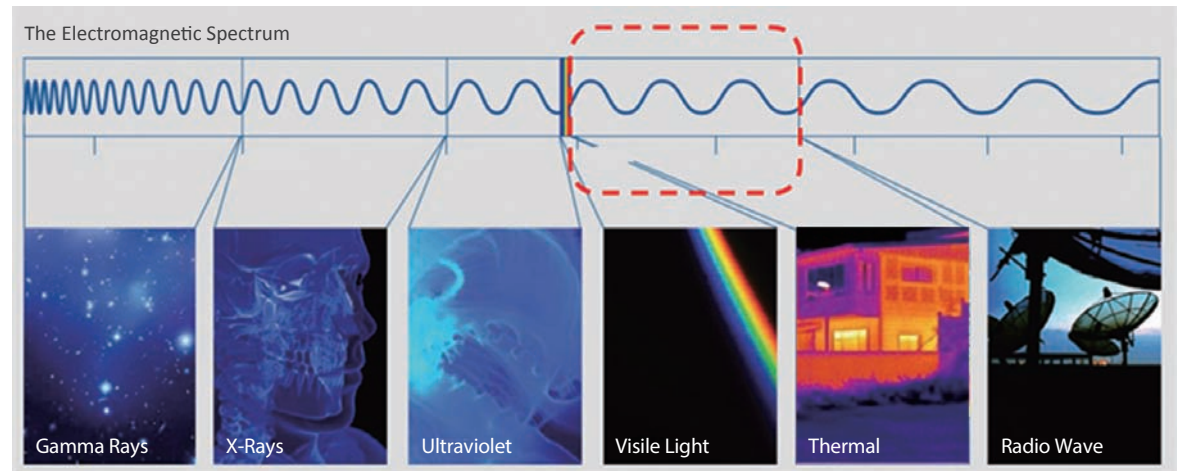
- **Accessories / Video Software** 12
 - Accessories
 - Video Software

- **Solutions / Applications** 14
 - Solutions
 - Applications

What Is Thermal Imaging?

Any object with temperature above absolute zero(-273.15 °C) emits infrared radiation. Infrared radiation sits between the visible spectrum(0.4~0.75 μm) and microwave spectrum(>15 μm). Although we can't see it, we experience it every day. Sun and fire is also sources of infrared energy that we can feel through its heat. Usually a higher temperature object emits more infrared radiation. The image quality depends on the temperature difference, with higher differentials yielding better images. That is how we can distinguish the temperature difference in the thermal image.

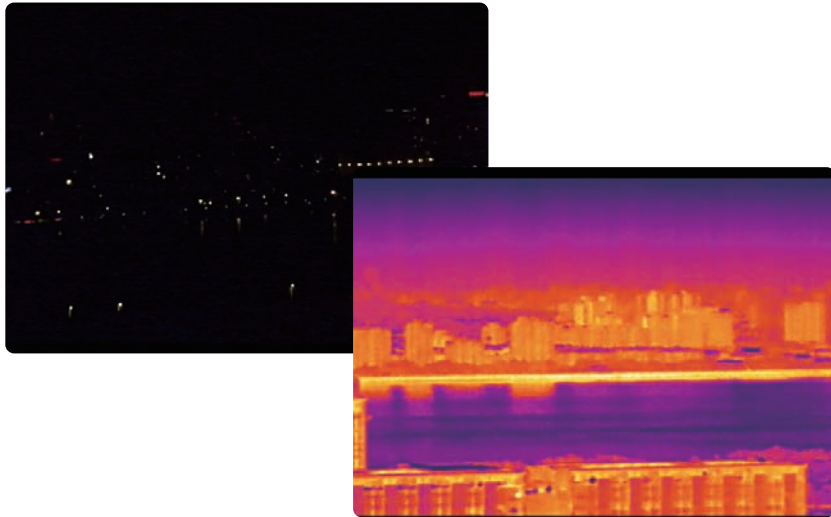
Different objects emit different infrared radiation, this data will be collected by optical lens and sent out to the infrared detector. The infrared detector converts an infrared signal to an electrical signal. The electrical signal will be processed into an image by the DSP that can be viewed by people. Thermal images include temperature information. We can integrate a special algorithm if we want to get exact temperature information from the image.



Why Use Thermal Imaging?

Video surveillance needs effective detection and identification of an object. Right now visible camera is used in most monitoring applications, but visible camera cannot work in all conditions, especially in the total darkness and harsh environments. However thermal camera requires no light source, it is excellent for detecting objects in darkness and harsh environments. In addition, thermal camera has the ability of long-range detection and temperature measurement, so that thermal camera can be used together with visible camera to achieve all-weather and comprehensive monitoring.

Detection in total darkness



Thermal camera has no need for additional lighting.
Even in total darkness ,it has perfect image quality just as daytime.

Work under harsh environments



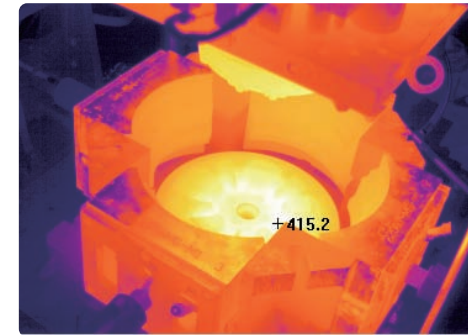
Thermal camera has a better detection ability and performance in harsh environments such as rain/fog/haze etc.

Strong light restrain



Thermal camera will not be blinded by strong light such as headlight/streetlight etc.

Temperature measurement and alarm



Thermal camera can realize temperature measurement to get exact temperature information. It can trigger an alarm to inform people about the problem when temperature is over threshold.

High accuracy of IVS



Usually thermal image has simply background. It's ideal for intelligent video analysis and offers higher accuracy in detecting moving objects .

Long-range detection



Thermal camera collects infrared radiation of any objects above absolute zero degree which can travel long distance. Typically , camera with 100mm lens has ability of detecting people over 3Km

THERMAL SOLUTION



Thermal Camera

Hybrid Thermal

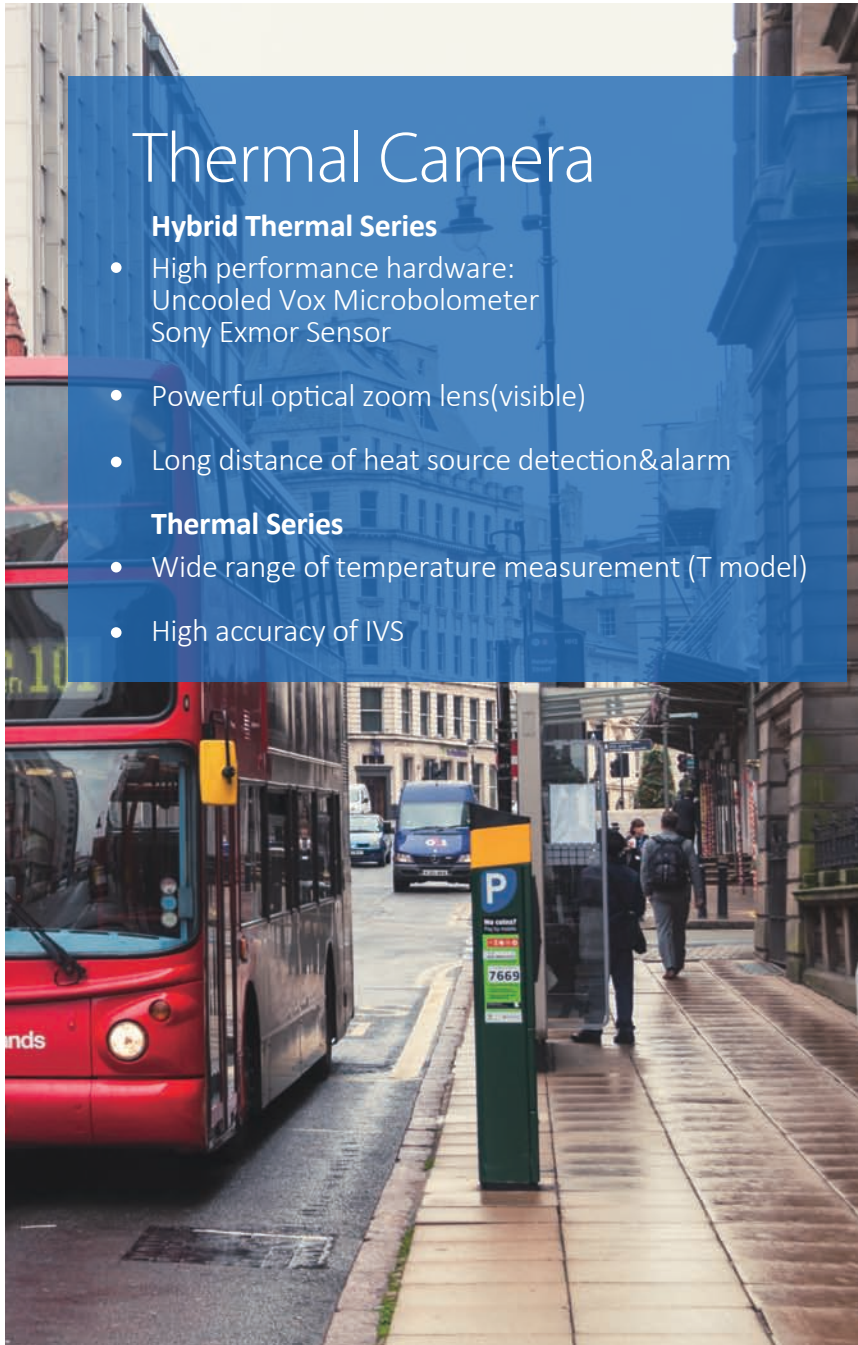
Thermal Camera



Hybrid Thermal Series

- High performance hardware: Uncooled Vox Microbolometer Sony Exmor Sensor
- Powerful optical zoom lens(visible)
- Long distance of heat source detection&alarm

Thermal Series





- Wide range of temperature measurement (T model)
- High accuracy of IVS







		TPC-PT8620B	TPC-PT8320B
Model			
Thermal	Image Sensor	Uncooled Vox Microbolometer	Uncooled Vox Microbolometer
	Effective Pixels	640(H) x 512(V)	336(H) x 256(V)
	Sensitivity	<40mK@f/1.0	<40mK@f/1.0
	Lens	20 ~ 100mm 25 ~ 75mm(Optional) 30 ~ 150mm(Optional)	20 ~ 100mm 25 ~ 75mm(Optional) 30 ~ 150mm(Optional)
	Angle of View	H: 30.4° ~ 6.2° H: 26° ~ 8.4°(Optional) H: 20.6° ~ 4.2°(Optional)	H: 15.2° ~ 3.1° H: 13° ~ 4.2°(Optional) H: 10.3° ~ 2.1°(Optional)
	Temperature range&accuracy	--	--
	Measurement Preset	--	--
Visible	Temperature Alarm	--	--
	Image Sensor	1/1.8" 2M Exmor CMOS	1/1.8" 2M Exmor CMOS
	Lens	15 ~ 360mm 21 ~ 500mm(Optional) 12.5 ~ 775mm(Optional)	15 ~ 360mm 21 ~ 500mm(Optional) 12.5 ~ 775mm(Optional)
	Angle of View	H:32.3° ~ 1.4° H: 23.5° ~ 1.0° (Optional) H: 28.8° ~ 0.5° (Optional)	H:32.3° ~ 1.4° H: 23.5° ~ 1.0° (Optional) H: 28.8° ~ 0.5° (Optional)
General	Min. Illumination	0.005Lux@F1.6; (Color) 0Lux@F1.6;(IR on)	0.005Lux@F1.6; (Color) 0Lux@F1.6; (IR on)
	Video Compression	H.264/MJPEG	H.264/MJPEG
	Frame Rate	Thermal:30fps@1280x1024 (default)/720P Visible:30fps@1080P (default)/720P	Thermal:30fps@1280x1024 (default)/720P Visible:30fps@1080P (default)/720P
	Pan/Tilt Range	300 presets Pan: 0° ~ 360°endless; Tilt: -60° ~ 30°, Tilt: -60° ~ 60° (Optional)	300 presets Pan: 0° ~ 360°endless; Tilt: -60° ~ 30°, Tilt: -60° ~ 60° (Optional)
	Intelligent Video(optional)	IVS, Heat source detection&alarm	IVS, Heat source detection&alarm
	Compatibility	ONVIF,PSIA,CGI	ONVIF,PSIA,CGI
	Ingress Protection	IP66	IP66
Working Temperature	-35°C~+65°C (-40°C~+70°C optional)	-35°C~+65°C (-40°C~+70°C optional)	
Power	DC24V/AC24V ,<100W	DC24V/AC24V,<100W	

*IVS: Tripwire, Intrusion, Object distinguish, Abandon detection, Missing detection.





Hybrid Thermal

		TPC-PT8620-T	TPC-PT8620	TPC-PT8320-T	TPC-PT8320
Model					
Thermal	Image Sensor	Uncooled Vox Microbolometer	Uncooled Vox Microbolometer	Uncooled Vox Microbolometer	Uncooled Vox Microbolometer
	Effective Pixels	640(H) x 512(V)	640(H) x 512(V)	336(H) x 256(V)	336(H) x 256(V)
	Sensitivity	<40mK@f/1.0	<40mK@f/1.0	<40mK@f/1.0	<40mK@f/1.0
	Lens	25mm/60mm/100mm	35mm/60mm/100mm	25mm/60mm/100mm	35mm/60mm/100mm
	Angle of View	H: 25°/10.4°/6.2°	H: 18°/10.4°/6.2°	H: 13°/5°/3.3°	H: 9.3°/5°/3.3°
	Temperature range&accuracy	Low Gain -40°C ~+550°C High Gain -40°C ~+160°C Max (±2°C, ±2%)	--	Low Gain -40°C ~+550°C High Gain -40°C ~+160°C Max (±2°C, ±2%)	--
	Measurement Preset	Spot:8/Line:8/Area:8 Support 8 presets simultaneously	--	Spot:8/Line:8/Area:8 Support 8 presets simultaneously	--
	Temperature Alarm	Support	--	Support	--
Visible	Image Sensor	1/1.8" 2M Exmor CMOS	1/1.8" 2M Exmor CMOS	1/1.8" 2M Exmor CMOS	1/1.8" 2M Exmor CMOS
	Lens	6 ~ 180mm (30x)	6 ~ 180mm (30x)	6 ~ 180mm (30x)	6 ~ 180mm (30x)
	Angle of View	H: 51.2° ~ 1.8°	H: 51.2° ~ 1.8°	H: 51.2° ~ 1.8°	H: 51.2° ~ 1.8°
	Min. Illumination	30x: 0.005Lux@F1.6(Color); 0Lux@F1.6(IR on);	30x: 0.005Lux@F1.6(Color); 0Lux@F1.6(IR on);	30x: 0.005Lux@F1.6(Color); 0Lux@F1.6(IR on);	30x: 0.005Lux@F1.6(Color); 0Lux@F1.6(IR on);
	Video Compression	H.264/MJPEG	H.264/MJPEG	H.264/MJPEG	H.264/MJPEG
General	Frame Rate	Thermal:30fps@1280x1024 (default)/720P Visible:30fps@1080P (default)/720P	Thermal:30fps@1280x1024 (default)/720P Visible:30fps@1080P (default)/720P	Thermal:30fps@1280x1024 (default)/720P Visible:30fps@1080P (default)/720P	Thermal:30fps@1280x1024 (default)/720P Visible:30fps@1080P (default)/720P
	Pan/Tilt Range	300 presets Pan: 0° ~ 360°endless;Tilt: -45° ~ 90°	300 presets Pan: 0° ~ 360°endless;Tilt: -45° ~ 90°	300 presets Pan: 0° ~ 360°endless;Tilt: -45° ~ 90°	300 presets Pan: 0° ~ 360°endless;Tilt: -45° ~ 90°
	Intelligent Video(optional)	IVS, Heat source detection&alarm	IVS, Heat source detection&alarm	IVS, Heat source detection&alarm	IVS, Heat source detection&alarm
	Compatibility	ONVIF,PSIA,CGI	ONVIF,PSIA,CGI	ONVIF,PSIA,CGI	ONVIF,PSIA,CGI
	Ingress Protection	IP66	IP66	IP66	IP66
	Working Environment	-40°C~+70°C	-40°C~+70°C	-40°C~+70°C	-40°C~+70°C
	Power	AC24V ,<70W	AC24V ,<70W	AC24V ,<70W	AC24V ,<70W

Hybrid Thermal		TPC-SD8620-T	TPC-SD8620	TPC-SD8320-T	TPC-SD8320
Model					
Thermal	Image Sensor	Uncooled Vox Microbolometer	Uncooled Vox Microbolometer	Uncooled Vox Microbolometer	Uncooled Vox Microbolometer
	Effective Pixels	640(H) x 512(V)	640(H) x 512(V)	336(H) x 256(V)	336(H) x 256(V)
	Sensitivity	<40mK@f/1.0	<40mK@f/1.0	<40mK@f/1.0	<40mK@f/1.0
	Lens	25mm/35mm/50mm	25mm/35mm/50mm	25mm/35mm/50mm	25mm/35mm/50mm
	Angle of View	H: 25°/18°/12.4°	H: 25°/18°/12.4°	H: 13°/9.3°/6.5°	H: 13°/9.3°/6.5°
	Temperature range&accuracy	Low Gain -40°C ~+550°C High Gain -40°C ~+160°C Max (±2°C, ±2%)	--	Low Gain -40°C ~+550°C High Gain -40°C ~+160°C Max (±2°C, ±2%)	--
	Measurement Preset	Spot:8/Line:8/Area:8 Support 8 presets simultaneously	--	Spot:8/Line:8/Area:8 Support 8 presets simultaneously	--
	Temperature Alarm	Support	--	Support	--
Visible	Image Sensor	1/1.8" 2M Exmor CMOS	1/1.8" 2M Exmor CMOS	1/1.8" 2M Exmor CMOS	1/1.8" 2M Exmor CMOS
	Lens	6mm ~ 180mm(30x)	6mm ~ 150mm(30x)	6mm ~ 180mm(30x)	6mm ~ 180mm(30x)
	Angle of View	H: 51.2° ~ 1.8°	H: 51.2° ~ 1.8°	H: 51.2° ~ 1.8°	H: 51.2° ~ 1.8°
	Min. Illumination	0.005Lux@F1.6(Color); 0Lux@F1.6(IR on);	0.005Lux@F1.6(Color); 0Lux@F1.6(IR on);	0.005Lux@F1.6(Color); 0Lux@F1.6(IR on);	0.005Lux@F1.6(Color); 0Lux@F1.6(IR on);
	Video Compression	H.264/MJPEG	H.264/MJPEG	H.264/MJPEG	H.264/MJPEG
General	Frame Rate	Thermal:30fps@1280x1024 (default)/720P Visible: 30fps@1080P (default)/720P	Thermal:30fps@1280x1024 (default)/720P Visible: 30fps@1080P (default)/720P	Thermal:30fps@1280x1024 (default)/720P Visible:30fps@1080P (default)/720P	Thermal:30fps@1280x1024 (default)/720P Visible:30fps@1080P (default)/720P
	Pan/Tilt Range	300 presets Pan: 0° ~ 360°endless; Tilt: -45° ~ 90°	300 presets Pan: 0° ~ 360°endless; Tilt: -45° ~ 90°	300 presets Pan: 0° ~ 360°endless; Tilt: -45° ~ 90°	300 presets Pan: 0° ~ 360°endless; Tilt: -45° ~ 90°
	Intelligent Video(optional)	IVS, Heat source detection&alarm	IVS, Heat source detection&alarm	IVS, Heat source detection&alarm	IVS, Heat source detection&alarm
	Compatibility	ONVIF,PSIA,CGI	ONVIF,PSIA,CGI	ONVIF,PSIA,CGI	ONVIF,PSIA,CGI
	Ingress Protection	IP66	IP66	IP66	IP66
	WorkingTemperature	-40°C~+70°C	-40°C~+70°C	-40°C~+70°C	-40°C~+70°C
	Power	AC24V ,<40W	AC24V ,<40W	AC24V ,<40W	AC24V ,<40W

*IVS: Tripwire, Intrusion, Object distinguish, Abandon detection, Missing detection.

Thermal

	TPC-SD5600-T	TPC-SD5600	TPC-SD5300-T	TPC-SD5300
Model				
Image Sensor	Uncooled Vox Microbolometer	Uncooled Vox Microbolometer	Uncooled Vox Microbolometer	Uncooled Vox Microbolometer
Effective Pixels	640(H) x 512(V)	640(H) x 512(V)	336(H) x 256(V)	336(H) x 256(V)
Thermal Sensitivity	<40mK@f/1.0	<40mK@f/1.0	<40mK@f/1.0	<40mK@f/1.0
Lens	13mm/19mm	13mm/19mm	13mm/19mm	13mm/19mm
Angle of View	H: 45° /32°	H: 45° /32°	H: 25° /17°	H: 25° /17°
Digital Zoom	24X	24X	16X	16X
Temperature range&accuracy	Low Gain -40°C ~+550°C High Gain -40°C ~+160°C Max (±2°C, ±2%)	--	Low Gain -40°C ~+550°C High Gain -40°C ~+160°C Max(±2°C,±2%)	--
Measurement Preset	Spot:8/Line:8/Area:8 Support 8 presets simultaneously	--	Spot:8/Line:8/Area:8 Support 8 presets simultaneously	--
Temperature Alarm	Support	--	Support	--
Video Compression	H.264/MJPEG	H.264/MJPEG	H.264/MJPEG	H.264/MJPEG
Frame Rate	30fps@1280x1024 (default)/720P	30fps@1280x1024 (default)/720P	30fps@1280x1024 (default)/720P	30fps@1280x1024 (default)/720P
Tri-mode Video Output	IP/HDCVI/Analog	IP/HDCVI/Analog	IP/HDCVI/Analog	IP/HDCVI/Analog
Pan/Tilt Range	255 presets Pan: 0° ~ 360°endless; Tilt: -15° ~ 90°, auto flip 180°	255 presets Pan: 0° ~ 360°endless; Tilt: -15° ~ 90°, auto flip 180°	255 presets Pan: 0° ~ 360°endless; Tilt: -15° ~ 90°, auto flip 180°	255 presets Pan: 0° ~ 360°endless; Tilt: -15° ~ 90°, auto flip 180°
Preset Speed	Pan:300° /s ; Tilt: 200° /s	Pan:300° /s ; Tilt: 200° /s	Pan:300° /s ; Tilt: 200° /s	Pan:300° /s ; Tilt: 200° /s
Intelligent Video(optional)	IVS, Heat source detection&alarm	IVS	IVS, Heat source detection&alarm	IVS
Compatibility	ONVIF,PSIA,CGI	ONVIF,PSIA,CGI	ONVIF,PSIA,CGI	ONVIF,PSIA,CGI
Ingress Protection	IP66	IP66	IP66	IP66
Working Temperature	-40°C~+60°C	-40°C~+60°C	-40°C~+60°C	-40°C~+60°C
Power	AC24V,<17W	AC24V,<17W	AC24V,<17W	AC24V,<17W

*IVS: Tripwire, Intrusion, Object distinguish, Abandon detection, Missing detection.

Thermal



	TPC-BF5600-T	TPC-BF5600	TPC-BF5300-T	TPC-BF5300
Model	 		 	
Image Sensor	Uncooled Vox Microbolometer	Uncooled Vox Microbolometer	Uncooled Vox Microbolometer	Uncooled Vox Microbolometer
Effective Pixels	640(H) x 512(V)	640(H) x 512(V)	336(H) x 256(V)	336(H) x 256(V)
Thermal Sensitivity	<40mK@f/1.0	<40mK@f/1.0	<40mK@f/1.0	<40mK@f/1.0
Lens	7mm/13mm/19mm/35mm	7mm/13mm/19mm/35mm	7mm/13mm/19mm/35mm	7mm/13mm/19mm/35mm
Angle of View	H: 90° /45° /32° /18°	H: 90° /45°/32°/18°	H: 45° /25° /17° /9.3°	H: 45° /25° /17° /9.3°
Digital Zoom	24X	24X	16X	16X
Temperature range&accuracy	Low Gain -40°C ~+550°C High Gain -40°C ~+160°C Max(±2°C, ±2%)	--	Low Gain -40°C ~+550°C High Gain -40°C ~+160°C Max(±2°C, ±2%)	--
Measurement Preset	Spot:8/Line:8/Area:8 Support 8 presets simultaneously	--	Spot:8/Line:8/Area:8 Support 8 presets simultaneously	--
Temperature Alarm	Support	--	Support	--
Video Compression	H.264/MJPEG	H.264/MJPEG	H.264/MJPEG	H.264/MJPEG
Frame Rate	30fps@1280x1024 (default)/720P	30fps@1280x1024 (default)/720P	30fps@1280x1024 (default)/720P	30fps@1280x1024 (default)/720P
Tri-mode Video Output	IP/HDCVI/Analog	IP/HDCVI/Analog	IP/HDCVI/Analog	IP/HDCVI/Analog
Intelligent Video(optional)	IVS, Heat source detection&alarm	IVS	IVS, Heat source detection&alarm	IVS
Compatibility	ONVIF,PSIA,CGI	ONVIF,PSIA,CGI	ONVIF,PSIA,CGI	ONVIF,PSIA,CGI
Ingress Protection	IP66	IP66	IP66	IP66
Working Temperature	-40°C~+60°C	-40°C~+60°C	-40°C~+60°C	-40°C~+60°C
Power	AC24V/DC12V/POE,<6W	AC24V/DC12V/POE,<6W	AC24V/DC12V/POE,<6W	AC24V/DC12V/POE,<6W

*IVS: Tripwire, Intrusion, Object distinguish, Abandon detection, Missing detection.

NVR

NVR




- Powerful Intel Multi-core CPU features perfect processing capability
- High standard industrial structure design creates high reliable products
- Support temperature measurement&alarm
- Support heat source detection&alarm
- Advanced intelligent functions: IVS/Face Detection(optional)

NVR				
	NVR724DR-256	NVR616DR-128-4K	NVR608R-128-4K	NVR608-32-4K
Model				
Processor	Intel Quad Core CPU	Intel Quad Core CPU	Intel Quad Core CPU	Intel Dual Core CPU
Video Compression	H.264/MJPEG	H.264/MJPEG	H.264/MJPEG	H.264/MJPEG
IP Video Inputs	256 channel	128 channel	128 channel	32 channel
Max Input/Record	512Mbps/512Mbps	384Mbps/256Mbps	384Mbps/256Mbps	384Mbps/256Mbps
Max Decoding	20ch@1080P (Optional: 52ch@1080P)	4ch@4K/16ch@1080P	4ch@4K/16ch@1080P	16ch@1080P
Display	2HDMI(Optional: 10HDMI) VGA, LCD	2HDMI, VGA, LCD	2HDMI, VGA	2HDMI, VGA
Max HDD	24x6TB	16x6TB	8x6TB	8x6TB
RAID	0/1/5/6/10/50/60	0/1/5/6/10/50/60	0/1/5/6/10/50/60	0/1/5/6/10/50/60
eSATA/Mini SAS	1/2	1/1	1/-	1/-
Audio In/Out	1/1, 2-way	1/1, 2-way	1/1, 2-way	1/1, 2-way
Alarm In/Out	4/4	16/8	16/8	16/8
Ethernet	4 Gigabit Ports	4 Gigabit Ports 2 Gigabit Fiber Optical Interface	2 Gigabit Ports	2 Gigabit Ports
PoE	--	--	--	--
USB	2 USB3.0, 2 USB2.0	1 USB3.0, 3 USB2.0	1 USB3.0, 3 USB2.0	1 USB3.0, 3 USB2.0
Power	AC100V~240V, Redundant <200W(Without HDD)	AC100V~240V, Redundant <51W(Without HDD)	AC100V~240V, Redundant <40W(Without HDD)	AC100V~240V <40W(Without HDD)
Intelligent Video(Optional)	Tripwire, Intrusion Abandoned/Missing Scene Change Face Detection	Tripwire, Intrusion Abandoned/Missing Scene Change Face Detection	Tripwire, Intrusion Abandoned/Missing Scene Change Face Detection	Tripwire, Intrusion Abandoned/Missing Scene Change Face Detection
Star Features	Support temperature measurement&alarm	Support temperature measurement&alarm	Support temperature measurement&alarm	Support temperature measurement&alarm







Accessories

TPC-SD5300/5600(-T)							
							
Model	PFA110+PFB300S	PFA110+PFB300S+PFA120	PFA110+PFB300C	PFA150	PFA151	PFA140	PFA110+PFB303S
Mount	Wall mount	Junction box	Ceiling mount	Pole mount	Corner mount	Power box	Parapet mount

TPC-SD8320/8620(-T)							
							
Model	PFA111+PFB303W	PFA111+PFB303W+PFA120	PFA111+PFB300C	PFA150	PFA151	PFA140	PFA111+PFB303S
Mount	Wall mount	Junction box	Ceiling mount	Pole mount	Corner mount	Power box	Parapet mount

TPC-BF5300/5600(-T)		
		
Model	PFA121	PFA121+PFA152
Mount	Junction box	Pole mount

Power Supply					
Model	DC Power		AC Power		
Apperance					
Description	DC12V, 1A 84x41x26mm	DC12V, 2.8A 148x70x31mm	AC24V, 1.5A 106x70x56mm	AC24V, 3A 120x80x63.5mm	AC24V, 5A 120x102x80mm

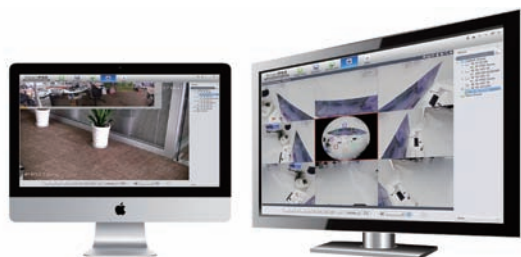
PoE Switch	PoE Midspan			PoE Extender	Tool	
Model	PFS3106-4P-60	PFS3110-8P-96	PFS4026-24P-370	PFT1200	PFT1300	PFM900
Apperance						
Description	4-port PoE Switch IEEE 802.3af/802.3at Each power ≤30W, Total≤60W	8-port PoE Switch IEEE 802.3af/802.3at Each power ≤30W, Total≤93W	24-port PoE Switch IEEE 802.3af/802.3at Each power ≤30W, Total≤370W	Max.60W power out IEEE 802.3af/802.3at, Hi-PoE Cascade two PoE extenders to cover the range of 300m	PoE-in port, PoE-out port, PoE for IPC port DIN rail mounting	Integrated Mount Tester For IPC, HDCVI, Analog camera TDR, record, playback, etc.

Video Software

Smart PSS

Smart Professional Surveillance System

Open, Free, Intelligent,
Make Your Security Surveillance
System Easy-to-Use



Devices & Users	Supported Devices	DVR, NVR, IPC, NVS, NKB, VDP, Video Wall Controller, TPC
	Max. Management Devices	256
	Max. Management Channels	2000
	Max. Number of Users	50
Video	Compression Format	H.265/H.264/MPEG-4/JPEG
	Display Resolution	Up to 4000 x 3000
Live Preview	Video Display Split	1/4/6/8/9/16/25/36 or customized split for Mac, up to 64 for windows
	Max. Preview Screen	4
	Max. Views	256
	Features	Snapshot, PTZ, Audio, Record, Talk, Tour task, View, Stream control, Optional video scale, Support temperature measurement & alarm
Playback	Max. Channels	36
	Max. Task of Export	10 once
	Features	Snapshot, PTZ, Audio, Speed 1/8x~8x, Synchronization playback, Faster/Slower play, Optional video scale
Recording	PC-NVR	32 Channels
System	Language	Czech, Danish, Dutch, English, Finnish, French, German, Greek, Italian, Japanese, Korean, Polish, Portuguese, Russian, Spanish, Thai, Traditional Chinese, Vietnamese
Minimum System Requirements	OS	Windows XP or above, Mac OSX 10.7 or above
	GPU	Intel(R) HD Graphics or above
	CPU	Intel(R) Core(TM) i3 or above
	Main Memory	2GB or above
	Display Resolution	1024x768 or above

DMSS

Digital Mobile Surveillance System

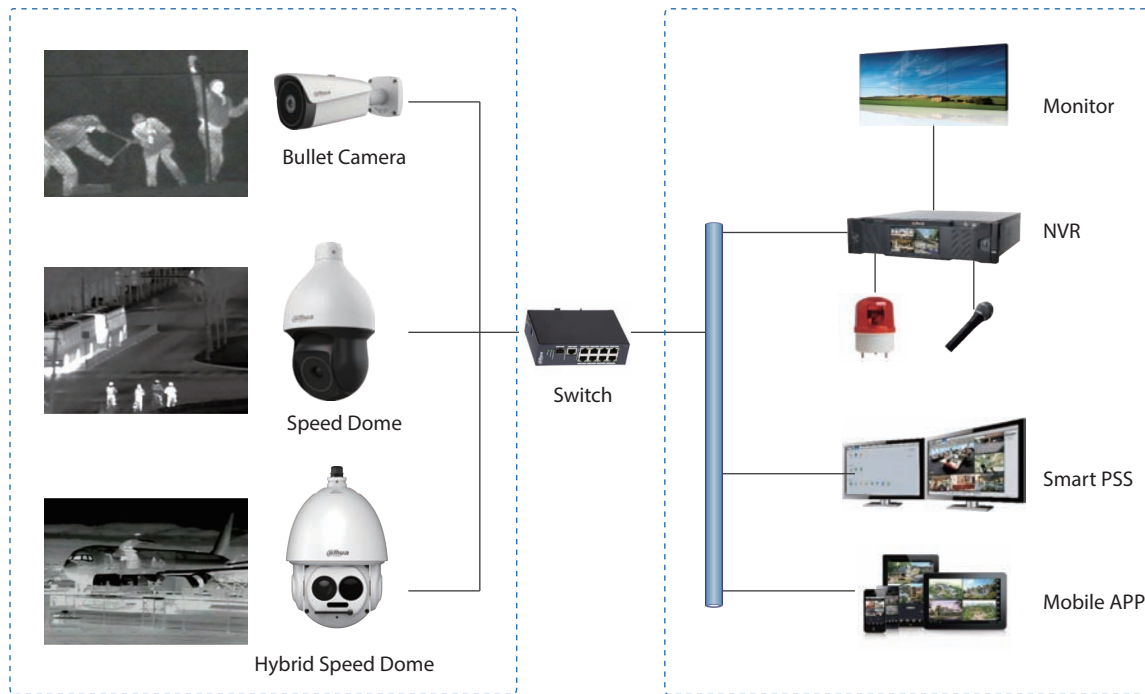
Monitor Anything with Your SmartPhone
or Tablet Anytime, Anywhere



Devices	Supported Devices	DVR, NVR, IPC, VDP, TPC
	Add Device Method	IP/Domain, SN, Import from cloud
	Features	Remote config, Alarm config, HDD info, Share device list
Video	Compression Format	H.265/H.264/MPEG-4/JPEG
	Display Resolution	Up to 1920 x 1080
Live Preview	Video Display Split	1/4/9/16 split
	Max. Channels Can be Opened at the Same Time	256
	Features	Snapshot, Record, Instant playback, PTZ, Unlock Stream control, Talk, Audio, Alarm, Color, Favorites, Remember channels
Playback	Max. Channels Can be Opened When Video Playback	4
	Time Period of Video	24 hours
	Features	Snapshot, Record, Faster/Slower play, Play next frame
	Max. Channels Can be Opened When Image Playback	1
Alarm Push	Alarm Type	Motion detect, Camera masking, Local alarm, Disk alarm, Face detection, Ivs alarm, Temperature alarm, Fire alarm
	Push Type	Record, Preview, Image
Minimum System Requirements	OS	gDMSS: Android 3.0 or above; iDMSS: IOS 7.0 or above
	CPU	1GHZ or above
	RAM	1GHZ or above
	Display Resolution	480x800 or above

Perimeter Facility

Airport / Dock / Industrial park / Bridge/ Warehouse



Key Features

- **High accuracy of intelligent analysis**

With accurate intelligent analysis, the system can strengthen virtual physical fence, reduce monitoring difficulty and probability of false alarm, achieve smart perception/smart analysis/smart alarm/smart tracking.

- **All-weather monitoring**

Reliable detection in total darkness to solve the problem of night monitoring . Work well in all harsh weather conditions, especially in fog/haze/rain/snow.

- **End to end solution**

The offered solution includes Camera/NVR/Smart PSS/DMSS, delivering true end to end user experience.

- **Easy operation**

System supports one-click searching/ one-click recording/local configuration/Intelligent search and playback/Intelligent hard disk management.





Border



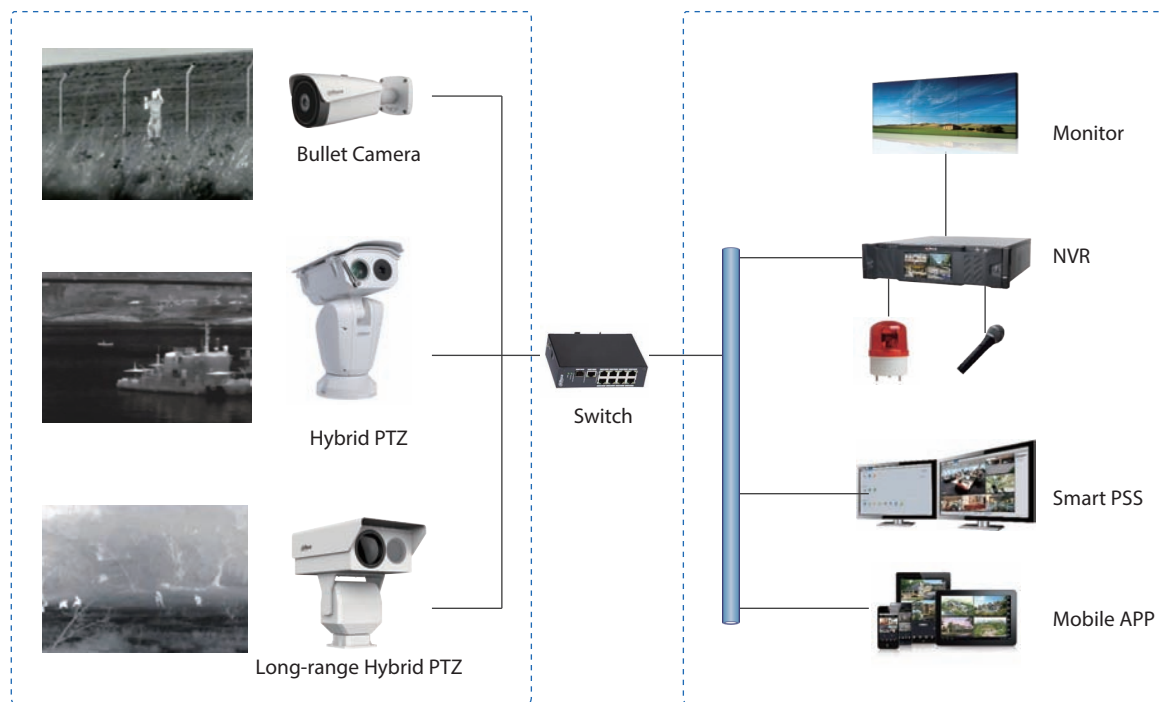
Coast



Maritime

Border & Coast

Border/ Coast/Maritime security



Key Features

- **Long distance detection**

The system supports long distance detection. Some cameras can even detect objects over 10 km which can effectively meet the requirements of monitoring moving targets in long distance.

- **Heat source exploration**

Thermal camera has heat source detection, which can effectively detect the heat source such as fire in long distance and is able to accurately locate the fire spot to prevent fire in advance.

- **End to end solution**

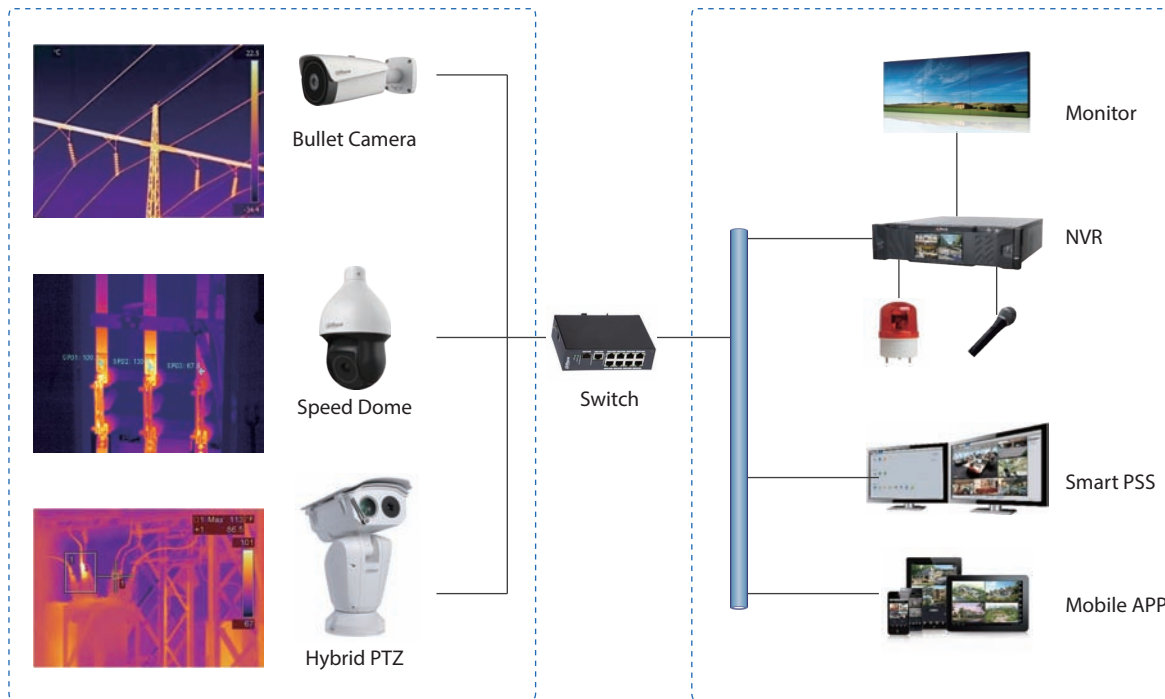
The offered solution includes Camera/NVR/Smart PSS/DMSS, delivering true end to end user experience.

- **Reliability under harsh environments**

Effective measures have been taken to ensure the products reliability under harsh conditions. For example, anti-salt test is performed to ensure the seaside application.

Electric Industry

Electrical industry / Automation / Custom



Key Features

- **High accuracy of temperature measurement**

Thermal camera has the ability of wide range and high accuracy temperature measurement. It can measure the temperature of targets such as electric cable, transformer. It will trigger an alarm to avoid loss when temperature is over threshold.

- **Temperature reports**

System can generate temperature reports and trend analysis which contain temperature information of change trend for certain period (e.g. one month), helping people to analyze existing problem and provide guidance/advise for following preventive maintenance.

- **End to end solution**

The offered solution includes Camera/NVR/Smart PSS/DMSS, delivering true end to end user experience.

- **Easy operation**

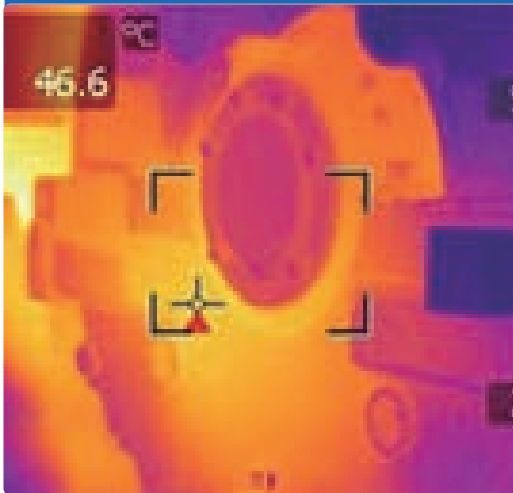
System supports one-click searching/ one-click recording/local configuration /Intelligent search and playback/Intelligent hard disk management.



More Applications

Manufacture & Automation

Power dissipation analysis
Overheat problem solved



Forest-fire Prevention

Detect fire with long distance
Over temperature alarm in time



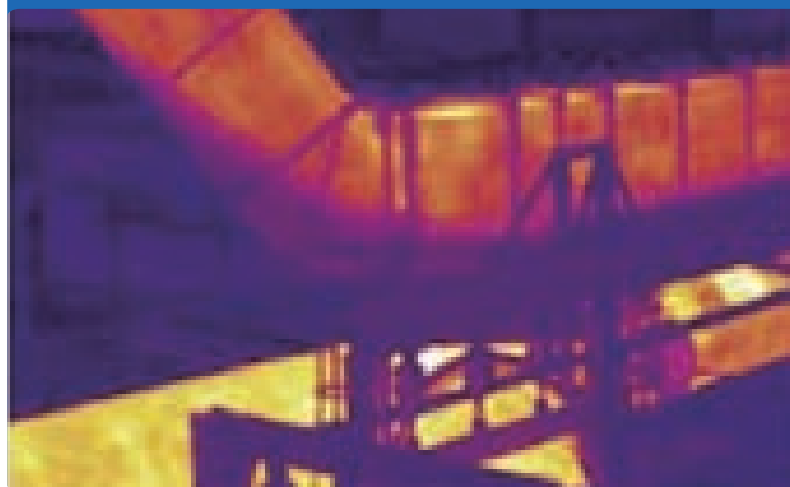
Residential Security

Light pollution free
Privacy protection



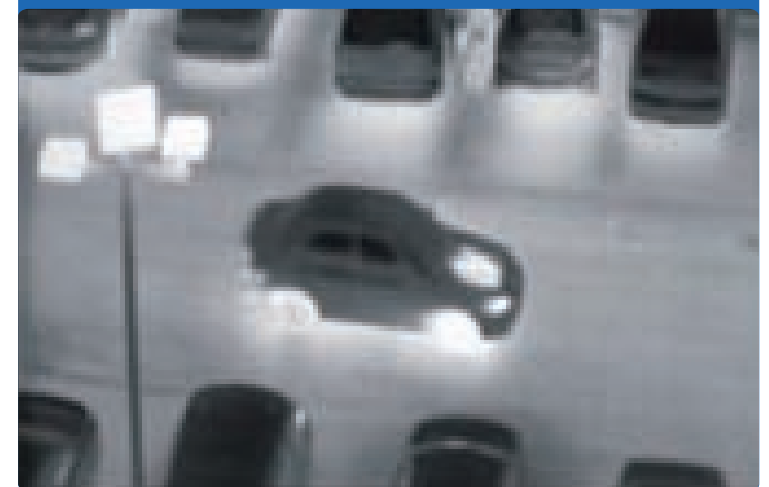
Energy Industry

Pipeline leakage with gas /oil
Pipeline plug detection



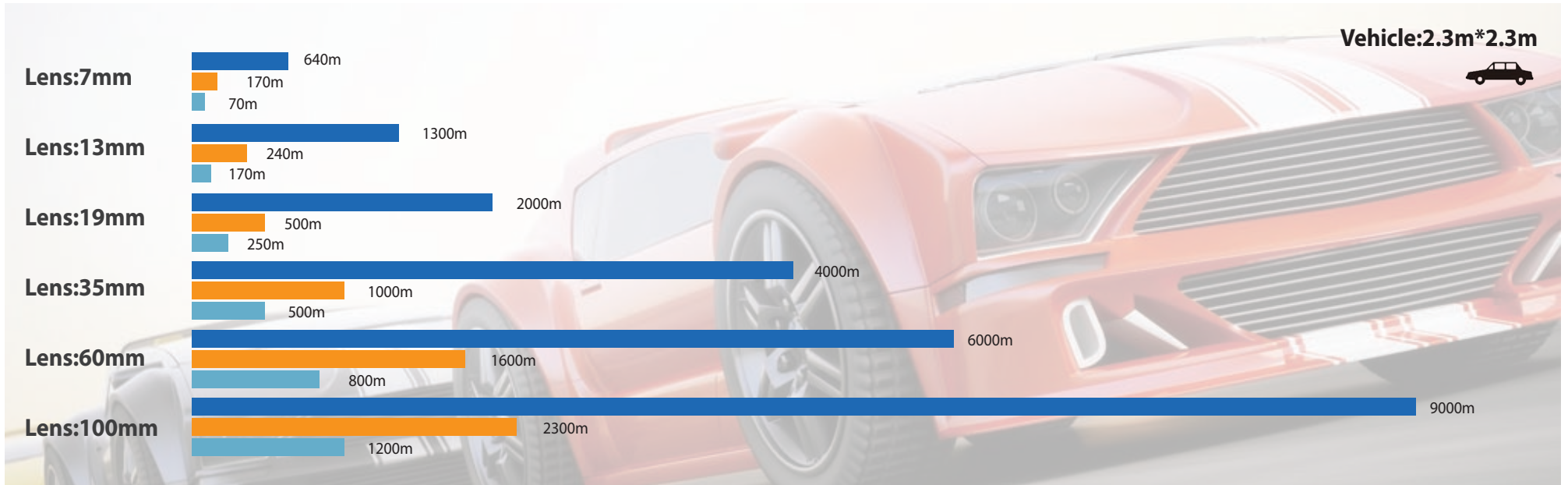
Transportation Industry

Flow detection (vehicle/man)
Monitor 24 hours in all conditions



Effective Distance

■ Detection distance
 ■ Recognition distance
 ■ Identification distance



*Note: Effective distance values shown above are nominal values and should be used as estimates only. Exact value calculations depend on a wide variety of conditions.



DAHUA TECHNOLOGY...
...MAKE YOUR LIFE SAFER

Distributed by

* Design and specifications are subject to change without notice.

Smart Thermal Imaging Products and Solutions-01, Jan 2016



www.dahuasecurity.com

DAHUA TECHNOLOGY CO., LTD.

No.1199 Bin'an Road, Binjiang District, Hangzhou, China. 310053

Tel: +86-571-87688883 Fax: +86-571-87688815

Email: overseas@dahuatech.com

www.dahuasecurity.com



© Dahua Technology, All rights reserved